

LOW THERMAL MASS EQUIPMENT



3 OF 11 BOGIE HEARTH FURNACES INSTALLED OVER A 15 YEAR PERIOD AT A LEADING EUROPEAN STEELROLL MANUFACTURERS. THE MOST RECENT BEING ON THE FAR LEFT.



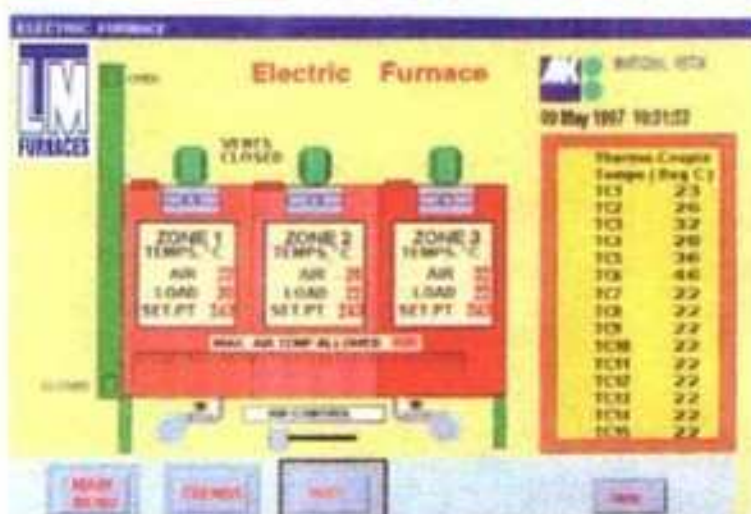
TWO FULLY AUTOMATED LIFT OFF MOVING HOOD FURNACES USED FOR HEAT TREATING AEROSPACE COMPONENTS

BUILT TO LAST

LTM IN CONTROL...



LTM
FURNACES



...ARE YOU?

IT'S A FACT

OUR FURNACE EQUIPMENT & CONTROL PANELS



ARE DESIGNED, MANUFACTURED INHOUSE



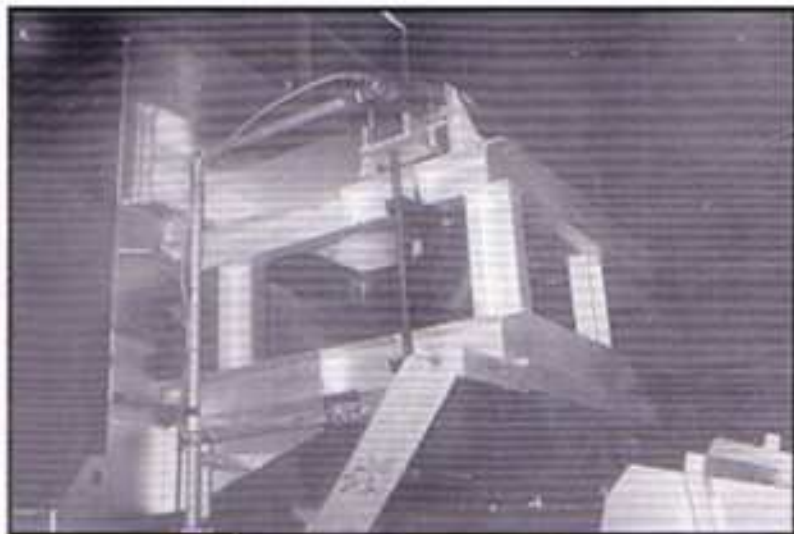
AND INSTALLED BY OUR OWN TECHNICAL PERSONNEL

L.T.M. FURNACES SPECIALISE IN SOLVING, DESIGNING AND MANUFACTURING THE RIGHT EQUIPMENT TO SUIT YOU THE CUSTOMER.

Left: Combustion equipment and power controls on a multi-zone **CONTINUOUS STRIP FURNACE** linked to a computerised temperature and throput data base system.



Right: Discharge end of the furnace, showing stainless steel strip having been annealed prior to recoiling.



FOR MAINTENACE & AFTER SALES SERVICES

Below: **PIT TYPE FURNACE** equipment for hardening and tempering alloy forgings prior to machining.



Above: A fully automated **MOVING HEARTH FURNACE** complete with overhead loading facility and personal safety barriers.



WE ALSO REFURBISH AND RECONDITION EXISTING PLANT



Left: **THE THREE LIFT OFF FURNACES** shown have their own power rating and variable, usable lengths to allow for a range of components to be heat treated to suit the customers production and breakdown service. Once loaded the furnace is programmed, the heat treatment requirement is carried out unattended until end of cycle.

LOW THERMAL MASS EQUIPMENT

Right: Two fully automated computer controlled **MOVING HOOD FURNACES** The two base system allows you to pre-load whilst carrying out any pre-programmed heat treatment procedure on the other base.



FOR CONTROL PANELS



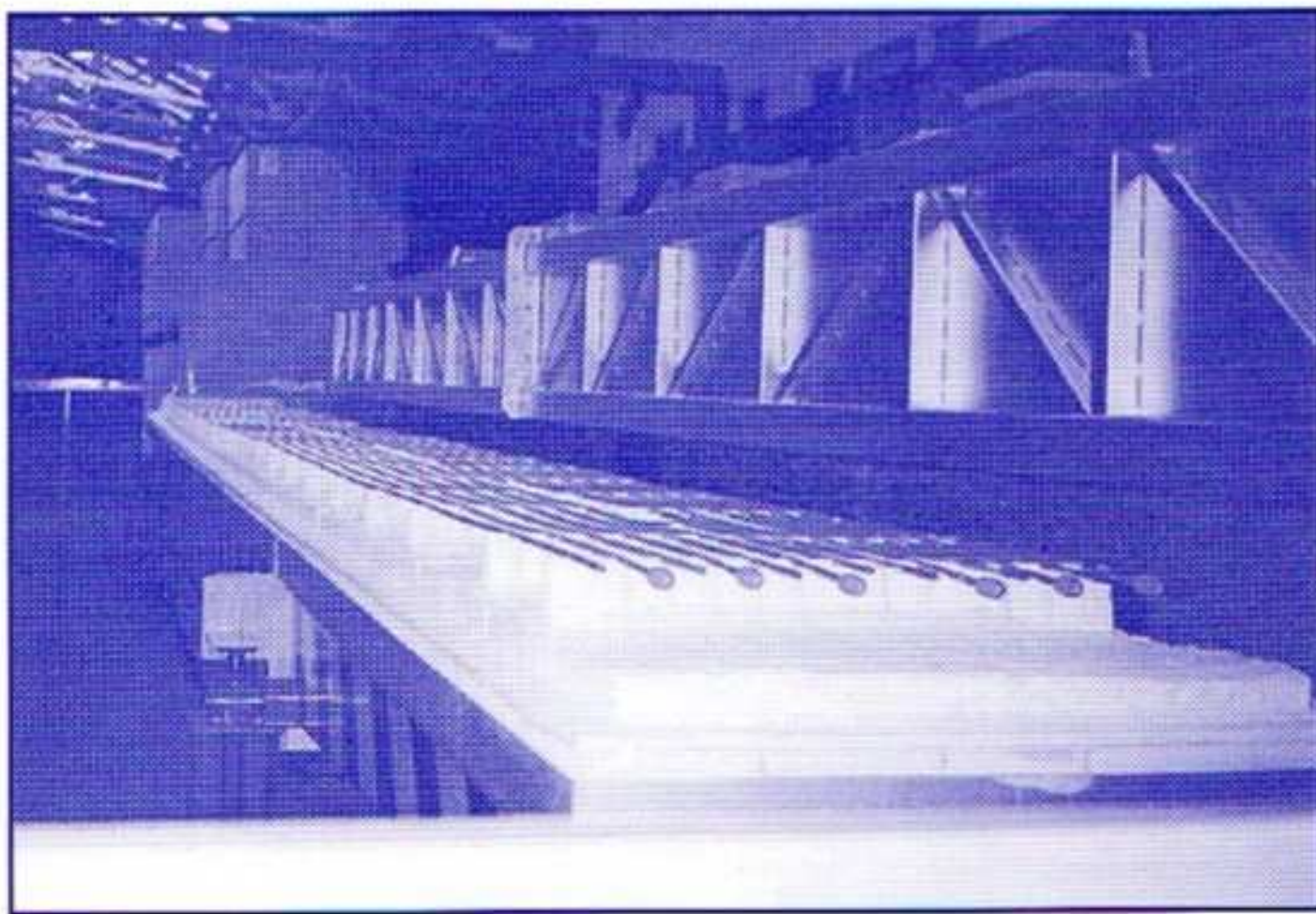
Left: A custom built **CONTROL PANEL** being tested out in our works by our own technical personnel, prior to commissioning.

**IF YOU HAVE A
HEAT TREATMENT
FURNACE PROBLEM
AND WANT A
LASTING SOLUTION
PLEASE CONTACT
LTM FURNACES
LIMITED**

**ALL THE EQUIPMENT
SHOWN IN THIS
SUPPLEMENT HAS BEEN
SUCCESSFULLY COMPLETED
SINCE FURNACES 95**

Try us for all your heat treatment furnace requirements

GENERAL FACT SHEET



ELECTRICALLY HEATED MOVING HEARTH TYPE FURNACE

BRIEF DESCRIPTION: Fully automated moving hearth type furnace, complete with overhead load handling equipment and control gear for solution treatment and ageing of nickel chrome alloy rods 20mm dia x 13.8 metres long.

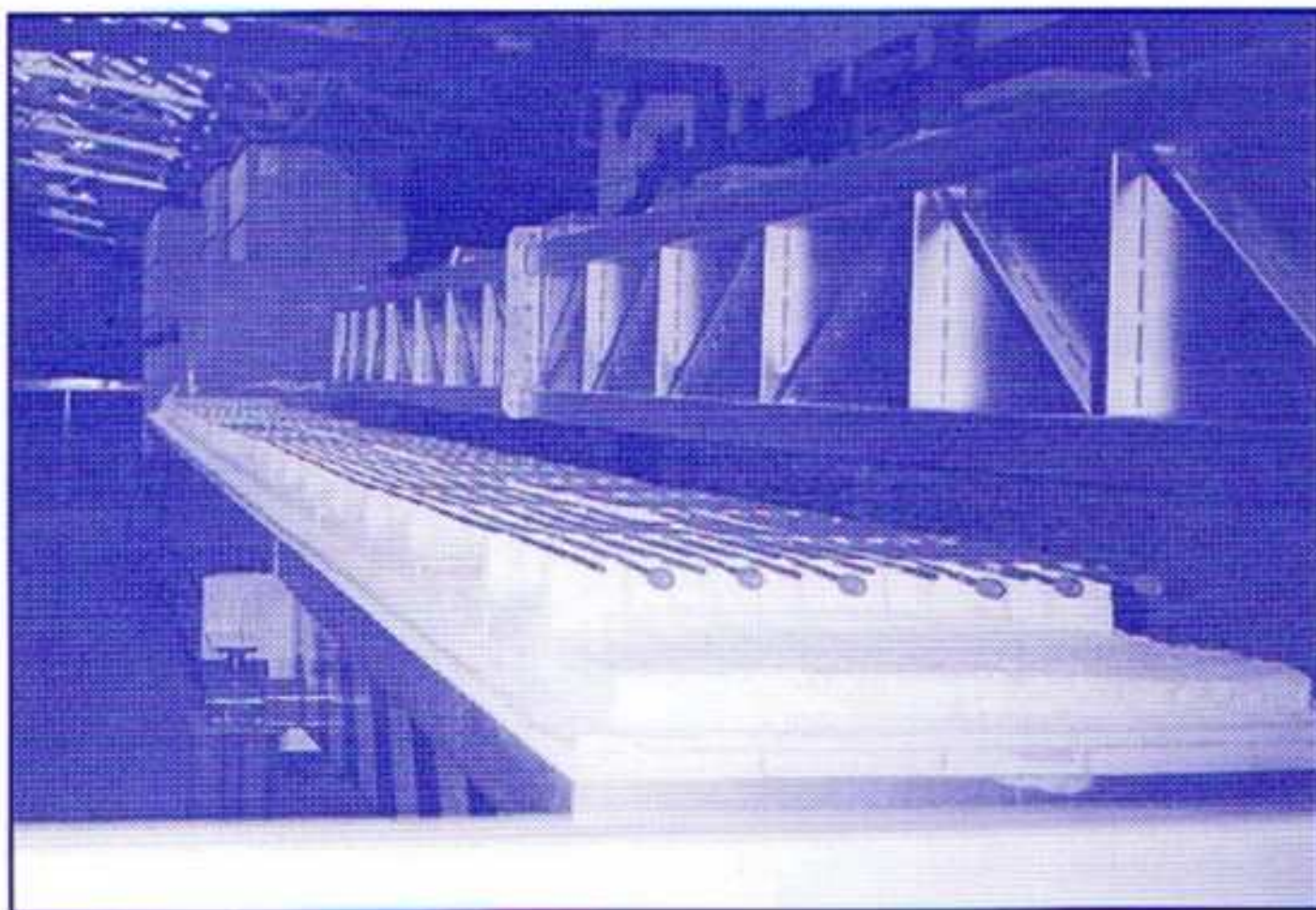
TYPICAL EXAMPLE:

SIZE:- USABLE VOLUME 150mm HIGH x 750mm WIDE x 14 METRES LONG.
RATING:- 240 KW MAX TEMP:- 1100°C. MAX CHARGE WEIGHT:- 500 KG

**WHILST L.T.M. FURNACES DESIGNS & BUILDS
THE ABOVE EQUIPMENT, WE ALSO REFURBISH AND
RECONDITION EXISTING PLANT**

Try us for all your heat treatment furnace requirements

GENERAL FACT SHEET



ELECTRICALLY HEATED MOVING HEARTH TYPE FURNACE

BRIEF DESCRIPTION: Fully automated moving hearth type furnace, complete with overhead load handling equipment and control gear for solution treatment and ageing of nickel chrome alloy rods 20mm dia x 13.8 metres long.

TYPICAL EXAMPLE:

SIZE:- USABLE VOLUME 150mm HIGH x 750mm WIDE x 14 METRES LONG.
RATING:- 240 KW MAX TEMP:- 1100°C. MAX CHARGE WEIGHT:- 500 KG

**WHILST L.T.M. FURNACES DESIGNS & BUILDS
THE ABOVE EQUIPMENT, WE ALSO REFURBISH AND
RECONDITION EXISTING PLANT**

Try us for all your heat treatment furnace requirements

GENERAL FACT SHEET



ELECTRICALLY HEATED FRONT OPENING TYPE FURNACE

BRIEF DESCRIPTION: Floor mounted, front opening, easy loading furnace for annealing and pre-heating of various ferrous products.

TYPICAL EXAMPLE:

SIZE:- USABLE VOLUME 1 METRE WIDE x 1 METRE HIGH x 1 METRES DEEP.
RATING:- 24 KW **MAX TEMP:-** 750°C. **MAX CHARGE WEIGHT:-** 250 KG

**WHILST L.T.M. FURNACES DESIGNS & BUILDS
THE ABOVE EQUIPMENT, WE ALSO REFURBISH AND
RECONDITION EXISTING PLANT**

Try us for all your heat treatment furnace requirements

GENERAL FACT SHEET



FUEL FIRED LIFT-OFF TYPE FURNACE

BRIEF DESCRIPTION: GAS FIRED LIFT-OFF FURNACE USING HIGH VELOCITY BURNERS FIRING THROUGH THE HEARTH.

TYPICAL EXAMPLE:

SIZE:- USABLE VOLUME 8.75 METRES LONG X 3.5 METRES WIDE X 2.0 METRES HIGH
FUEL: NATURAL GAS MAX TEMP:- 1100°C. MAX CHARGE WEIGHT:- 100TONS

**WHILST L.T.M. FURNACES DESIGNS & BUILDS THE
ABOVE EQUIPMENT, WE ALSO REFURBISH AND
RECONDITION EXISTING PLANT**

Try us for all your heat treatment furnace requirements

GENERAL FACT SHEET



ELECTRICALLY HEATED BOGIE HEARTH TYPE FURNACE

BRIEF DESCRIPTION: FLAT HEARTH FURNACE COMPLETE WITH A MOTORISED RISE & FALL DOOR, POWERED HEARTH TRAVERSING SYSTEM, FULLY PROGRAMMABLE INSTRUMENTATION USING THYRISTOR POWER CONTROL.

TYPICAL EXAMPLE:

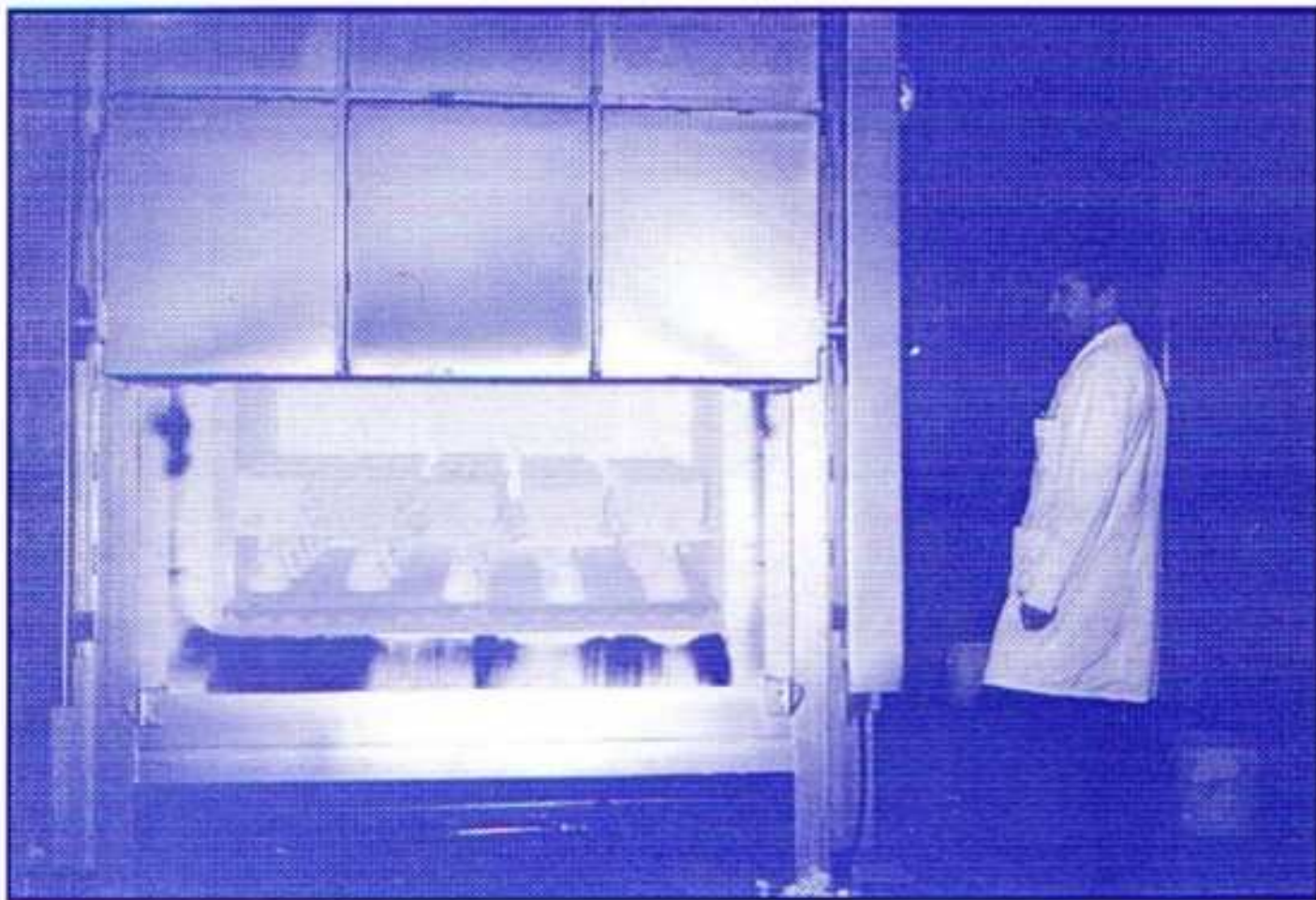
SIZE:- USABLE VOLUME 8.0 METRES LONG X 2.5 METRES WIDE X 2.0 METRES HIGH

RATING:- 450KW. MAX TEMP:- 1100°C. MAX CHARGE WEIGHT:- 70 TONS

**WHILST L.T.M. FURNACES DESIGNS & BUILDS THE
ABOVE EQUIPMENT, WE ALSO REFURBISH AND
RECONDITION EXISTING PLANT**

Try us for all your heat treatment furnace requirements

GENERAL FACT SHEET



FUEL FIRED BOX TYPE FURNACE

BRIEF DESCRIPTION: Gas fired box type burn out furnace used to de-wax investment casting moulds, complete with a ceramic environmental scrubbing system to clean the fume and soot produce during burn out working via oxygen monitoring equipment. Foot operated rise and fall door.

TYPICAL EXAMPLE:

SIZE:- USABLE VOLUME 1.5 METRES WIDE x 1 METRE HIGH x 1 METRE LONG.
FUEL:- NAT GAS OR PROPANE MAX TEMP:- 1050°C. MAX CHARGE WEIGHT:- 500kg OF MOULDS

**WHILST L.T.M. FURNACES DESIGNS & BUILDS
THE ABOVE EQUIPMENT, WE ALSO REFURBISH AND
RECONDITION EXISTING PLANT**